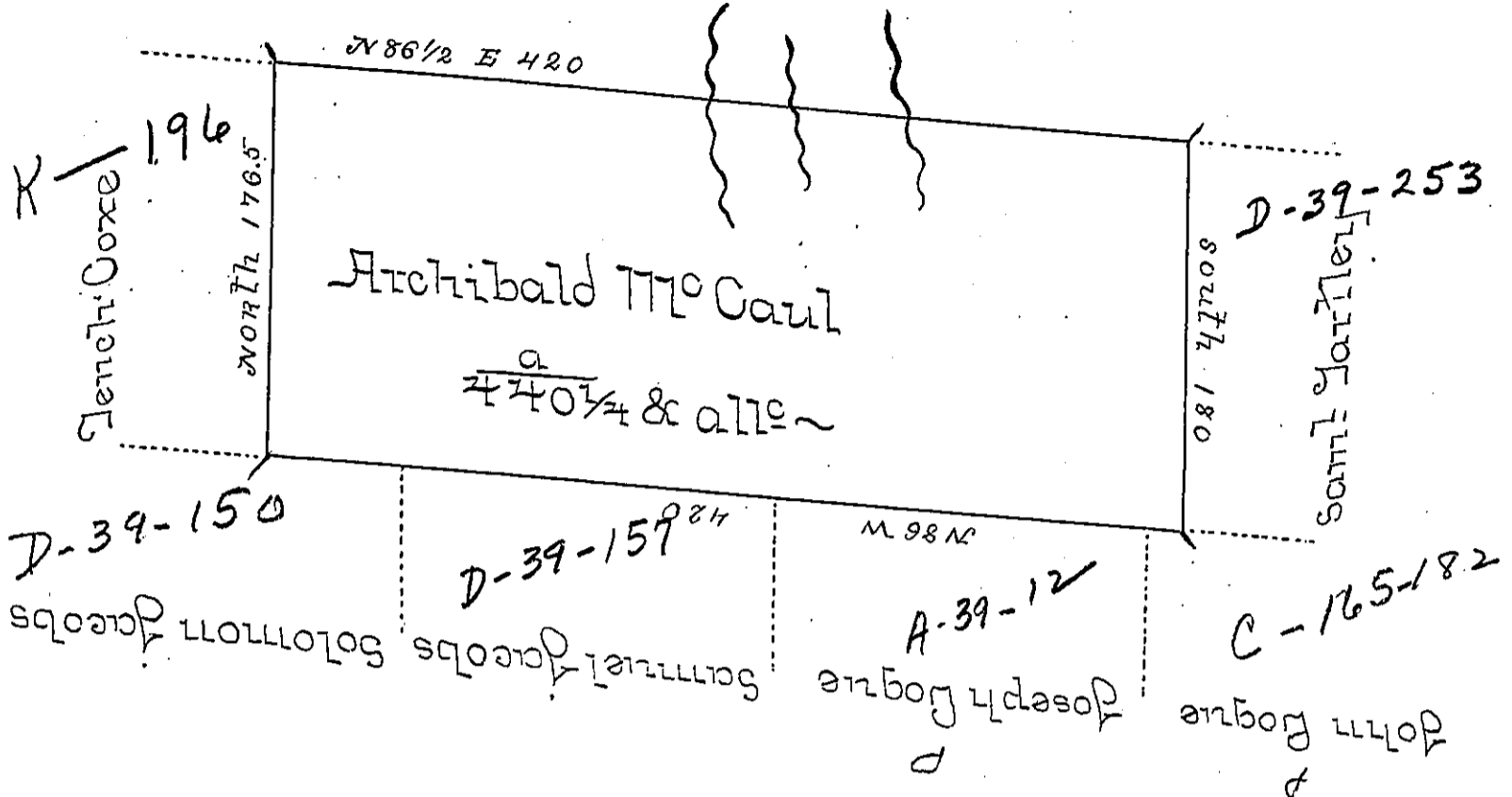


State of New York



A Draught of a Tract of land Called Situate Adjoining
 land of Samuel Gartley and others in Luzerne Co-
 untly, Surveyed on the 12th day of September 1787
 for Archibald McCaul in Pursuance of a warrant
 obl. the 26th day of July - 1787 Containing four Hun-
 dred and forty Acres and a Quarter and allow^{ce}
 of Six PC^s for Roads &c

by Wm Gray D.S.

To John Bukens Esq^r }
 Survey^r Gen^l.

IN TESTIMONY that the above is a copy of the original remaining on file in the
 Department of Internal Affairs of Pennsylvania, made con-
 formably to an Act of Assembly approved the 16th day of
 February, 1833, I have hereunto set my Hand and caused
 the Seal of said Department to be affixed at Harrisburg, this
 fourth day of May 1897.

James W. Latta
 Secretary of Internal Affairs.